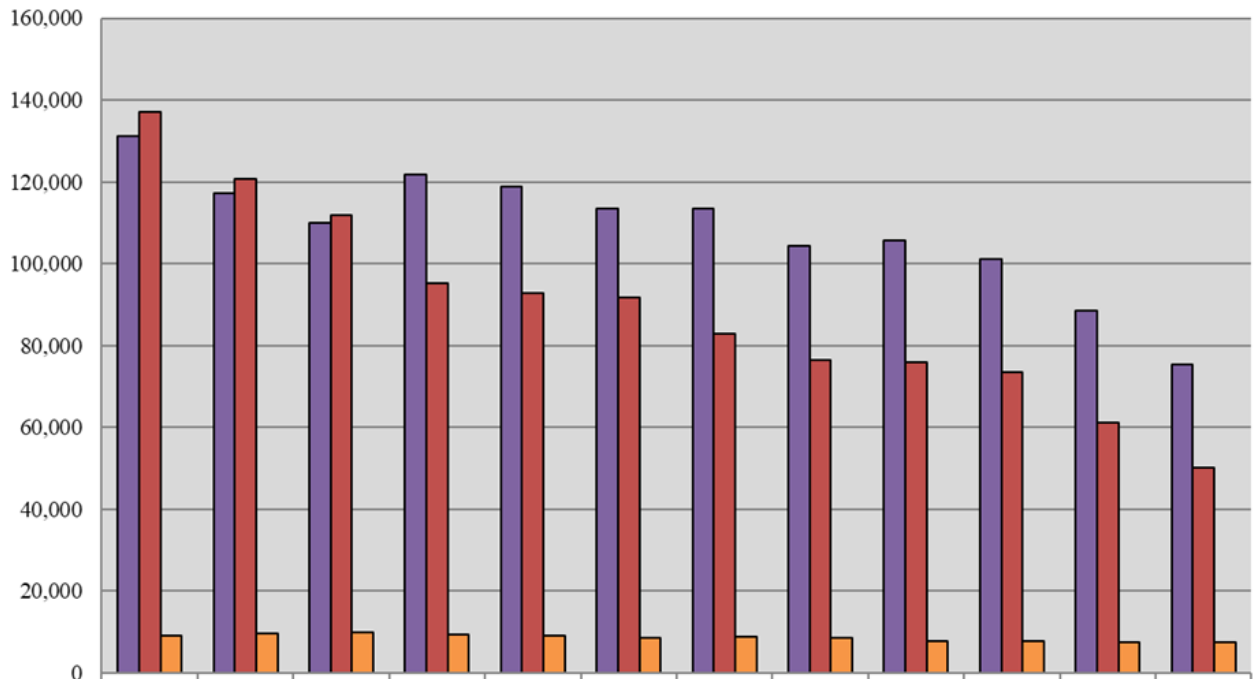


Court of Common Pleas 10-Year Total Caseload Trend (Civil & Criminal)



■ Filings	131,073	117,252	109,836	121,752	118,864	113,471	113,547	104,205	105,796	100,995	88,519	75,473
■ Dispositions	137,037	120,782	111,815	95,102	92,834	91,781	82,939	76,435	76,012	73,535	61,250	50,155
■ Preliminary Hearings	9,066	9,590	9,917	9,398	9,011	8,621	8,689	8,402	7,798	7,739	7,520	7,521

Fiscal Year